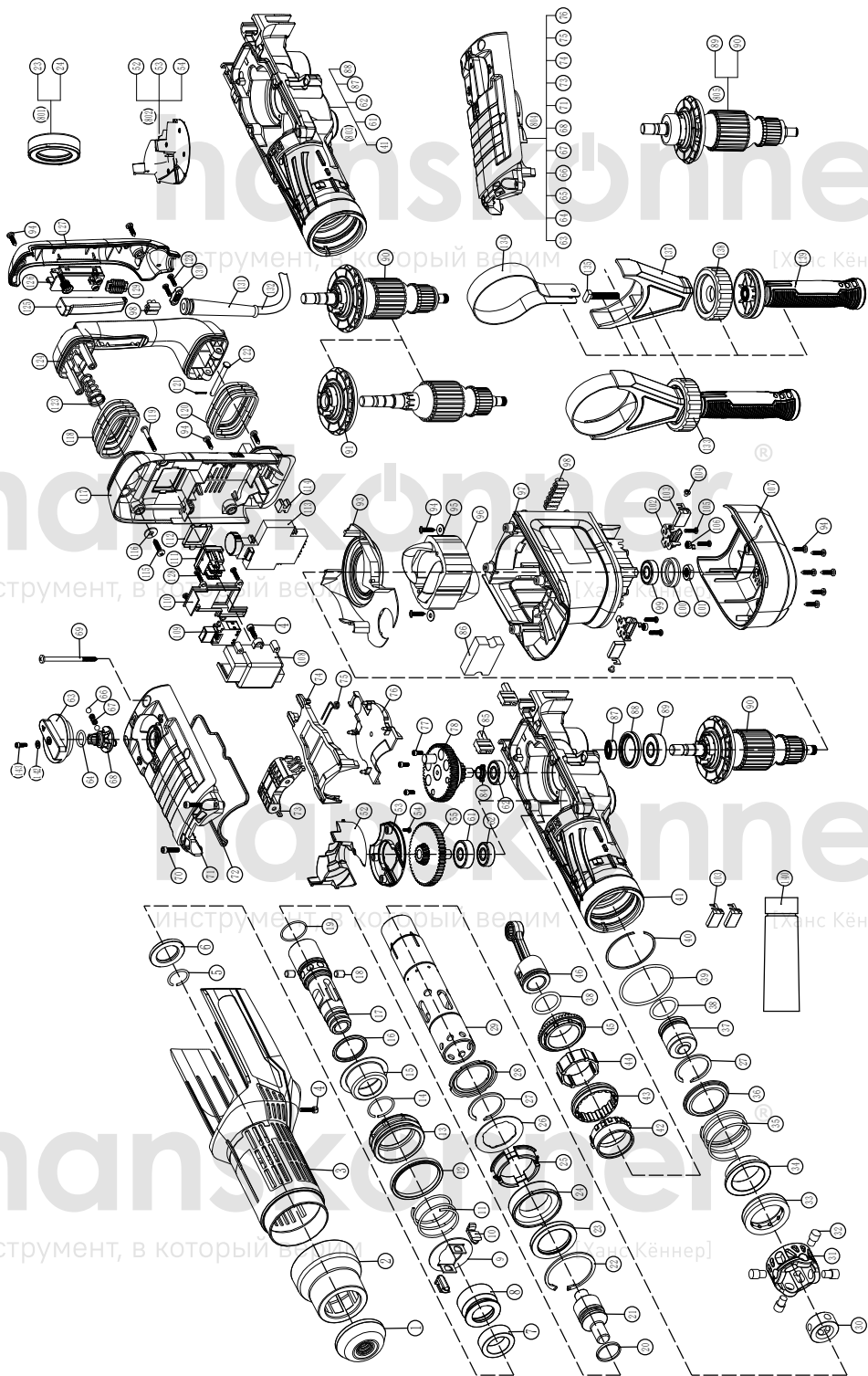


HRH1855M



No.	Description	No.	Description
1	Hammer rod protector	77	Hex .Socket Bolt M4x10(12.9)
2	Flex Sheath	78	Eccentric gear subassembl
3	Cover	84	Triangle rubber ring
4	Hex .Socket Bolt M5x12 (12.9)	85	Screw Block
5	Steel Wire Block Ring $\Phi 26.5 \times \Phi 2.5$	86	Wool block
6	Support plate B	87	Oil Seal Ring $\Phi 15 \times \Phi 25 \times 4.5$
7	Rubber Ring	88	Clamping ring
8	Lock Bead Sheath A	89	Ball Bearing 6302 LU
9	Change plate	90	Armature 220-240V
10	Insert block	91	Fan
11	Flex Sheath Spring	93	Fan Guide
12	Shaft seal ring	94	Wide tooth ST4.8x20 Torx head self-tapping screw
13	Sealed pressure block	95	$\Phi 6.5 \times \Phi 12 \times 1$ Flat Washer
14	$\Phi 32$ Retaining Ring	96	Stator 220-240V
15	Cylinder Locking discs	97	Housing
16	Rubber Washer	98	Rivet
17	Hammer Staff Sheath	99	Ball Bearing 6201ZV
18	Cylinder Lock Bead $\Phi 8.9 \times 12$	100	Bearing Ring
19	Fluorin O-Ring $\Phi 33.5 \times \Phi 3$	101	M12x1x6 Nut
20	L- Ring $\Phi 28.5 \times \Phi 36.4 \times 6.1$	102	Carbon brush wire
21	Impact Hammer	103	Carbon Brush-220-240V
22	$\Phi 68$ Retaining Ring	104	M4x5 Cross recessed pan head screws
23	Oil Seal Ring $\Phi 46 \times \Phi 64 \times 7$	105	ST4.2x10 Tapping Screw (8.8)
24	Oiliness Bearing A	106	Helical spring
25	Shock absorption ring A	107	Fan Cover
26	Spacer sleeve	108	Switch Box
27	$\Phi 46$ Stop ring	109	Switch 1
28	Support plate A	110	Switch Box Cover
29	Cylinder	111	Switch 2
30	Inner sliding block	112	Switch 2 cover
31	Fixed Distance Sleeve	113	Speed Adjuster 220-240V
32	Block lock bead	114	Indicator
33	Shock absorption ring B	115	ST5.5x25 Tapping Screw
34	sliding sleeve	116	$\Phi 6$ Flat Washer
35	sliding sleeve Spring	117	Side Handle Ass'y Base
36	Locating ring	118	Top Shock Absorption Jacket
37	Impact piston	119	Wide tooth ST4.8x40 Torx head self-tapping screw
38	Fluorin O-Ring $\Phi 32.5 \times \Phi 4.2$	120	Bottom Shock Absorption Jacket
39	Fluorin O-Ring $\Phi 69 \times \Phi 3.5$	121	Split Pin $\Phi 2 \times 14$
40	$\Phi 70$ Stop ring	122	Shaft Pin $\Phi 6 \times 55$
41	Crank Housing	123	Shock Absorption Spring
42	Oiliness Bearing B	124	Main Handle
43	Clutch	125	Switch Trigger
44	drive sleeve	126	Switch 3 (220-240V)
45	Big Cone-shaped Gear	127	Main Handle Cover
46	Piston&Connecting subassembly	128	ST4.2x16 Tapping Screw
52	Grease distributor A	129	Electricity Feels
53	Grease distributor B	130	Cord Clip
54	ST3.5x12 Cross recessed pan head tapping screws (12.9)	131	Cord Armor
55	Trip gear assembly	132	Cord
61	Ball Bearing 6301 LUV	133	Side Handle Subassembly
62	Ball Bearing 6201 RS	134	Side Handle Ass'y Steel Tie
63	Function Knob	135	T Bolt M8x51
64	O-Ring $\Phi 16 \times \Phi 3$	137	Side Handle Ass'y Base
66	S $\Phi 7$ Steel Ball	138	Side Handle cover
67	Dial Staff Sheath Spring	139	Side Handle
68	Dial Staff Sheath	140	Oil Bottle
69	Three combinations of wide tooth ST5.5x85 Torx head self-tapping screw	142	$\Phi 4$ Flat Washer
70	Hex .Socket Bolt Non-Standard screw M5x20(12.9)	143	ST4.2x14 Tapping Screw
71	Gear Cover	801	Oiliness Bearing A Subassembly
72	Airproof Ring	802	Grease distributorSubassembly
73	Guide Block	803	Crank Housing Subassembly
74	selector fork	804	Gear Cover Subassembly
75	torsion spring	805	Armature Subassembly 220-240V
76	Lifting jack		